

Astrastar³⁰⁰TM

Intuitive Touchscreen Spirometry

The Astrastar300 puts the sophistication and simplicity of a touchscreen in the palm of your hand. Enter data, review patient results and send or print reports with precision and ease. Customize your Astrastar300's firmware to facilitate and expand your testing and reporting functions. Output test data to your PC with AstrastarPro Spirometry software to further enhance your testing capabilities.



Simply tap on the Astrastar300's sensitive touchscreen to make available a wealth of useful functions.

sdi
DIAGNOSTICS

The Spirometry Source

Astra300™ Spirometer

Technical Specifications

Forced Parameters Measured

Forced Vital Capacity: FVC, FEV_{.5}, FEV₁, FEV₃, FEV₆, FEV₁/FVC, FEV₁/FEV₆, FEV_{.5}/FVC, FEV₃/FVC, PEF, FEF25, FEF50, FEF75, FEF25-75, FEF 75-85, FET, FET25-75, FEV₁/FEV_{.5}, FEV₁/PEF, FIF50, FIVC, FIV₁, FIV₁/FVC, FEV₁/FIV₁,PIF, MTT, PEF/PIF, BEV, Lung Age

MVV: Br/min

Relaxed Parameters Measured

VC: VC, TV, ERV, IRV, IC, Ti, Te, Tt, Ti/Tt

Maneuvers per patient: 5 total; best test and last test highlighted

Interpretation: Selectable – Kory, Miller, ATS, NLHEP (Ferguson)

Predicted sets: Selectable – 14 Total

Ethnic correction: Selectable – % Actual, Caucasian, Hispanic, AfroAmerican

Language: Selectable – English or Spanish

Measurement Scale (BTSP)

Flow range: 0–16 L/sec

Volume: 0–10 L

Measurement method: Infrared Interruption via Digital Turbine

Dynamic flow resistance: <1.5 cm H₂O/L/sec @ 14 L/sec

Precision of Measurements (BTSP)

At highest volume: +/- 3% or 50 mL

At highest flow: +/- 5% or 150 mL

Time related precision: .5%

Volume resolution: <6 mL

Sampling frequency: 50 Hz

Hardware Specifications

Storage capacity: 1000+ study database

Keyboard: Alphanumeric LCD touchscreen

Communication: USB to printer and PC, RS232

Optional: Bluetooth to PC

Dimensions: 5.75" x 3.25" x 4.0"

Power supply: 2 x 1.5 DC Alkaline or NiMH batteries

Weight: 9 oz (250 g)

Optional

OSHA module

Flex Pulse Oximetry module and program

NiMH battery/charger pack

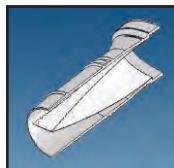
Calibration syringe

Astra300 is compatible with printers using USB connection and PCL6 drivers.



AstraGuard PFT Filters

Designed exclusively for Astra Spirometers. Free starter pack of 10 filters included with every Astra300.



Cross-section of filter shows placement of interior media. Edge of media is bonded to exterior housing to form a tight seal.



The filter media is tailored to fit inside every mouthpiece, providing an effective guard against cross-contamination.



Free Carrying Case

High-impact plastic case keeps unit and accessories ready for mobile testing.

Astra spirometers comply with 2005 ATS/ERS guidelines for spirometry.

Your dealer is:

sdi

DIAGNOSTICS

The Spirometry Source

Ten Hampden Drive, Easton, MA 02375 • (800) 678-5782 • FAX (508) 230-2752 • EMAIL sales@sdiagnostics.com

www.sdiagnostics.com